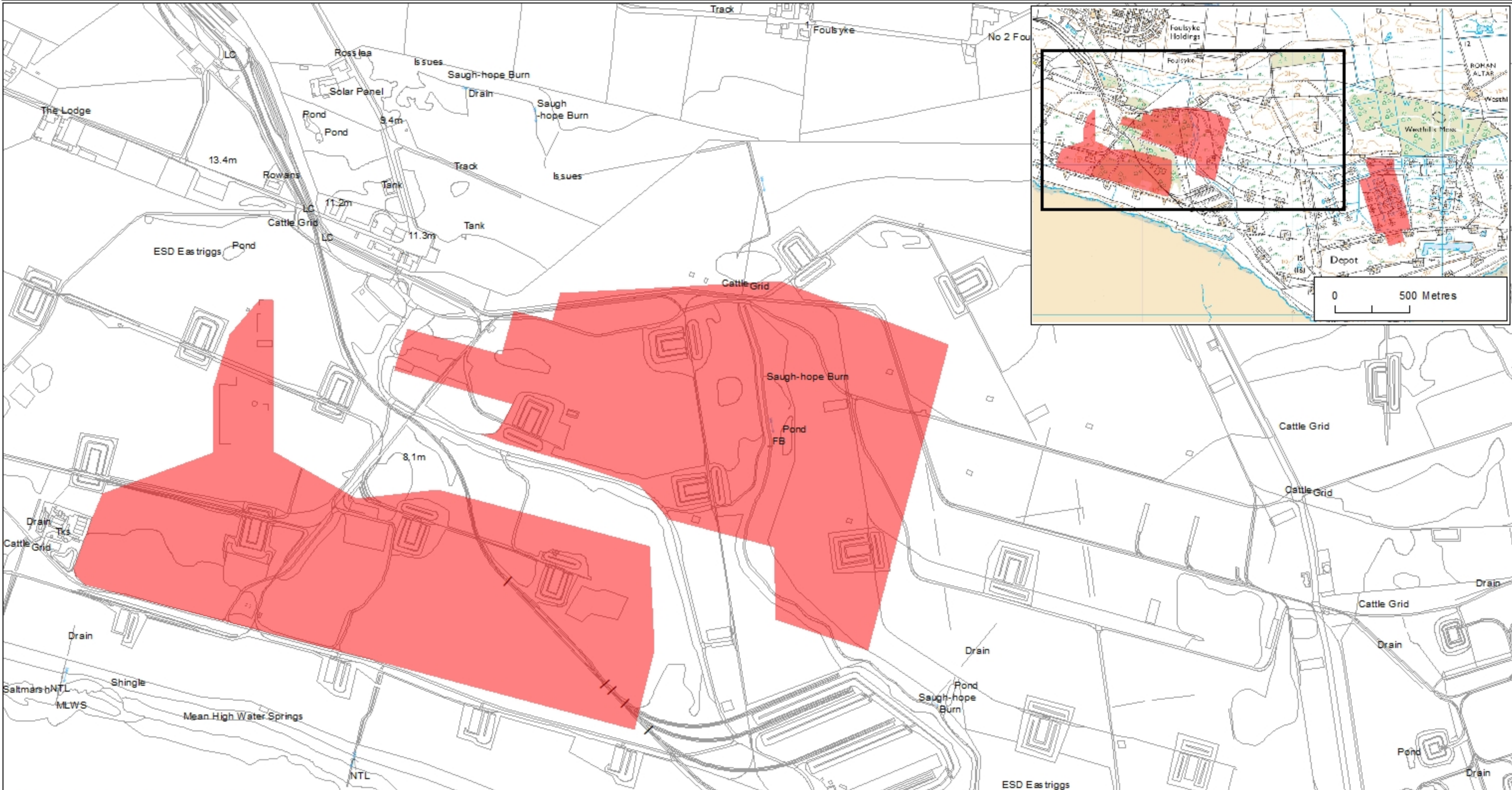


This is the plan referred to in the entry in the Schedule affecting:  
 Eastriggs former munitions factory, glycerine distillery and acids production area, gun-cotton section and nitro-glycerine hill, 600m SSW, 700m SE  
 and 2050m ESE of Rosslea.

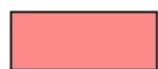


Designation Reference: SM13761

Eastriggs former munitions factory, glycerine distillery and acids production area, gun-cotton section and nitro-glycerine hill, 600m SSW, 700m SE and 2050m ESE of Rosslea.

Map 1 of 2

Parish: Dornock Scheduled Area



Map Sheet(s):  
 NY26SE

Scale: 1:5,000 0 140 280 420 560 Metres

Contains Historic Environment Scotland and Ordnance Survey Data © Historic Environment Scotland © Crown copyright and database rights 2022 Ordnance Survey [100057073]

Ordnance Survey Data

You are permitted to use this data solely to enable you to respond to, or interact with, the organisation that provided you with the data. You are not permitted to copy, sub-licence, distribute or sell any of this data to third parties in any form.